

PEINER Schnellmontagekran SMK 202

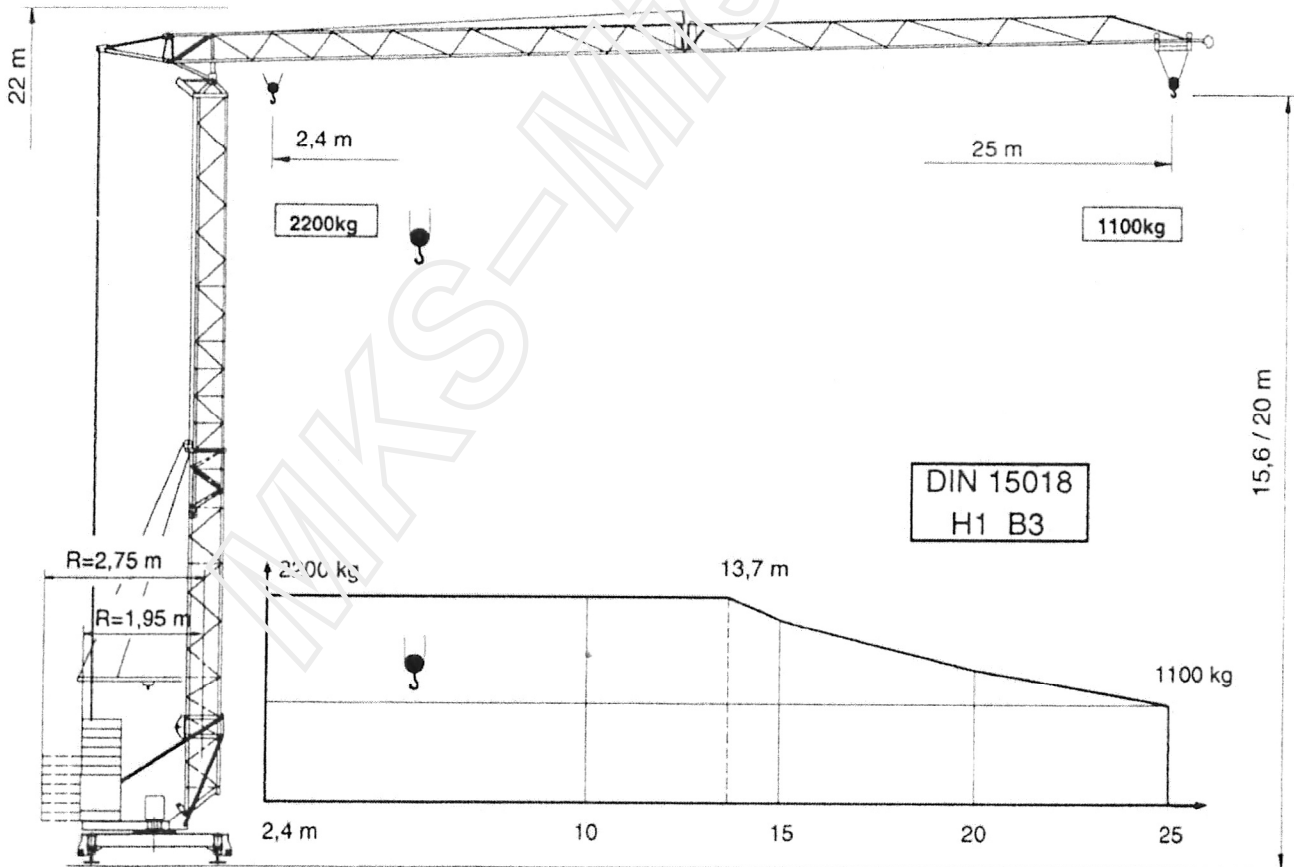
Fast self erecting tower crane

Grue à montage rapide

Max. Tragfähigkeit Lifting capacity Force de levage	2,2 t
Max. Ausladung Radius Portée	25,0 m
Max. Nutzlastmoment Load moment Couple de charge utile	295 kNm

"City- Kran"

20° Steilsteilung



ZUTK Nr. 627 + CE